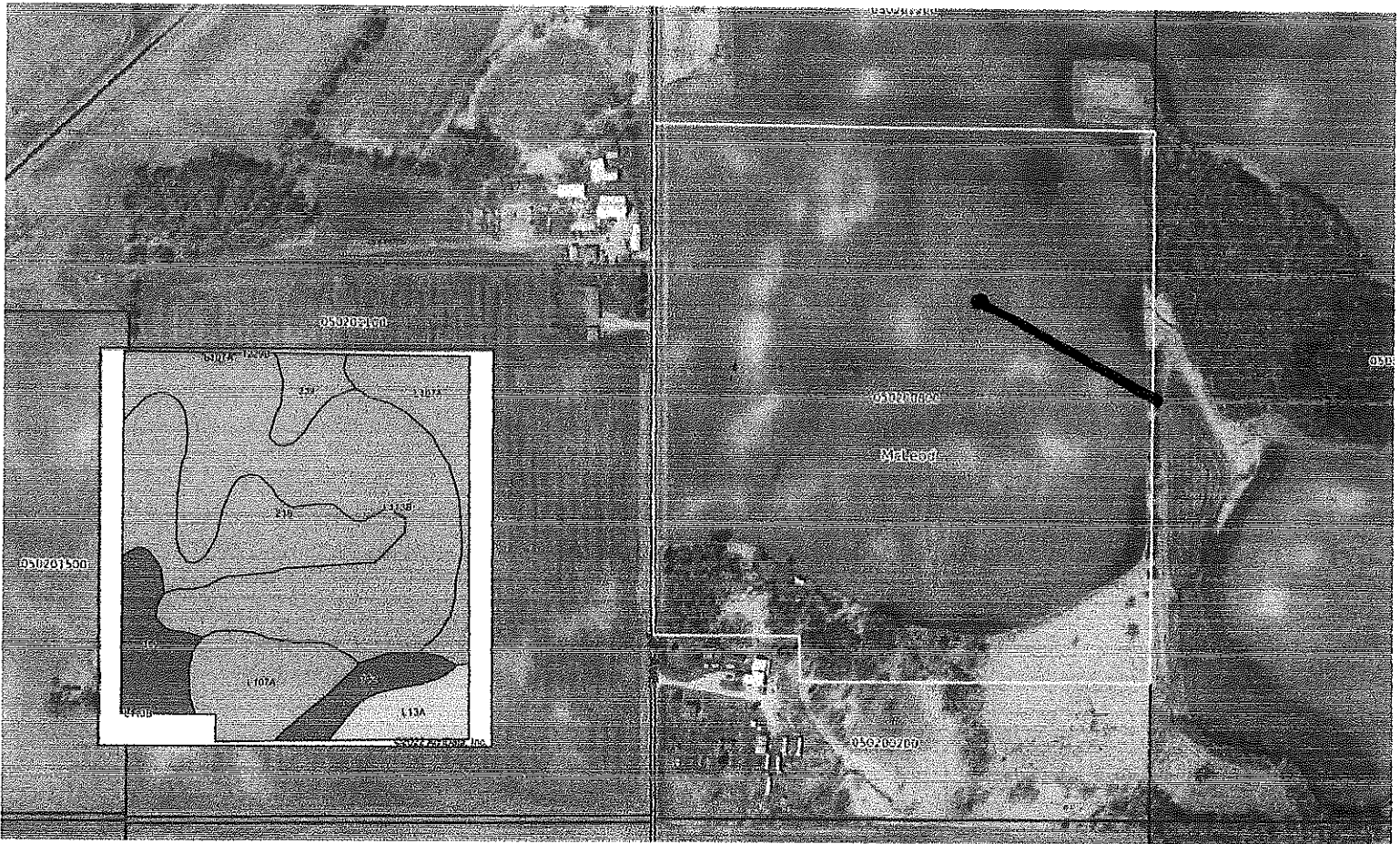


TILE LINE

McLeod County, MN – 43.6± Acres • Hale Township • PID #: 05-020-0800 • Description: Sect-20 Twp-117 Range-028, Includes small storage shed 2022 Taxes: \$1,836



Area Symbol: MN085, Soil Area Version: 19

Code	Soil Description	Acres	Percent of field	PI Legend	Non-Irr Class *c	Productivity Index
L113B	Reedslake-Le Sueur complex, 1 to 6 percent slopes	19.33	44.3%		IIe	98
239	Le Sueur loam, 1 to 3 percent slopes	9.01	20.7%		Iw	97
L107A	Canisteo-Glencoe complex, 0 to 2 percent slopes	8.18	18.8%		IIw	91
109	Cordova clay loam, 0 to 2 percent slopes	3.00	6.9%		IIw	87
L13A	Klossner muck, 0 to 1 percent slopes	2.25	5.2%		IIIw	77
112	Harp clay loam, 0 to 2 percent slopes	1.83	4.2%		IIw	90
Weighted Average					1.84	94.3

*c: Using Capabilities Class Dominant Condition Aggregation Method
Soils data provided by USDA and NRCS.

